

ISSUE 3 | 2021

THE BUZZ

The Newsletter of BCH Mechanical and ConServ Building Services

ED BERRY

CELEBRATES 40 YEARS WITH THE COMPANY!

PROJECT SPOTLIGHT

TAMPA GENERAL HOSPITAL
CENTRAL ENERGY PLANT EXPANSION

SAFETY MATTERS

PPE: OUR LAST LINE OF DEFENSE

BCH MECHANICAL, L.L.C.

Daryl Blume
CEO

John Fields
President

Dan Allen
Vice President - Operations

Brian Wilkinson
Vice President - Sales

Travis Lau
Vice President - Preconstruction

Carmandy Garber
CFO

Contact Information:
BCH Mechanical, L.L.C.
6354 118th Avenue N. Largo, FL 33773
Phone: 727.546.3561 Fax: 727.545.1801
www.bchmechanical.com

BCH Mechanical, L.L.C. is a mechanical contracting company, established in 1976, specializing in HVAC, plumbing, piping, medical gas, sheet metal, and service.

CONSERV BUILDING SERVICES, LLC

Brad McIntire
President

Ed Berry
Executive Vice President

Jason Morris
Vice President - Operations

Brian Powers
Vice President - Sales

Zori Cordero
Vice President - Administration

Contact Information:
ConServ Building Services, LLC
6350 118th Avenue N. Largo, FL 33773
Phone: 727.541.5503 Fax: 727.544.1924
Toll Free Service: 1.800.940.3241
service@conservonline.com
www.conservonline.com

ConServ Building Services, LLC, a division of BCH Mechanical, provides commercial HVAC-R services throughout the Southeastern U.S. Expanded services, such as plumbing, electrical, test & balance, and general maintenance, are offered at select locations.

ED BERRY CELEBRATES 40 YEARS!



Ed Berry, ConServ Building Services Executive Vice President, recently eclipsed 40 years with the company. A true testament of the man, he is to be part of the business for his entire career. Ed started with the company in 1981, fresh out of Pinellas Park High School (across the street from our office); he was one of only ten employees at the time. He has been a significant part of the growth and transformation of this small air conditioning company to one of the largest and most respected mechanical contractors in the industry.

In the early days, Ed did a little bit of everything, but it soon became apparent that his highly technical skills would be his real specialty to kick-start his career. He earned the reputation early on of being our "MacGyver" – if there was a unit or system problem, send Ed. It could be a unit operational issue, manufacturer malfunction, controls issue, building pressure (balancing issue) or any number of maladies that can wreak havoc on buildings. Ed was "the man" to go solve it, and his tenacity would not allow him to rest until he did. At a very early age, he went to every manufacturer course offered and became proficient on all unit manufacturers and control systems.

Ed befriended Jimmy Johnson, another company lifer who unfortunately passed a couple of years ago, and they became the Residential Division. No, we were never officially in the residential business, but many of our clients, associates, employees, friends of Daryl (affectionately called FODs) had A/C issues as well. Thus, for years, Jimmy and Ed solved home issues throughout Tampa Bay for those BCH connections, built a lifelong friendship, and solidified many long-term company relationships.

This was Ed – always doing extra, never backing down from a challenge, always available for the next FOD change out or to solve a delicate issue on a site. In 2005, after nearly 25 years in the BCH Construction Services Division, Ed accepted the challenge to help take ConServ Building Services, our owner direct service division, to the next level. He was part of the vision to not only take service regionally, but to develop the other owner direct service divisions under the ConServ umbrella. Over the next several years, Ed became licensed in multiple states and grew the Plumbing, Electrical and General Services divisions to provide full turn-key options direct to owners in Tampa Bay. Ed also simultaneously developed independent Test and Balance and Control divisions, that could service BCH, and other mechanical contractors and direct to owners as well.

Ed's approach to existing building facility owners hasn't changed much over the years; he just probes and asks a few questions on how he may be of service. What is your biggest issue with the facility? What keeps you up at night in operating the facility? What are you not getting from your current service provider? Then, he goes and solves their issues, that often have been a nuisance for years and that no one else could solve.

Ed, congratulations from the entire BCH and ConServ family on 40 years! I'm confident I will be writing a follow up in 10 years, when you hit your 50-year anniversary with the company.

-Daryl Blume, CEO

PROJECT SPOTLIGHT

TAMPA GENERAL HOSPITAL CEP EXPANSION

BCH Mechanical was awarded the mechanical and plumbing scope of work for the Tampa General Hospital Central Energy Expansion project. We are excited to be working with Gilbane Building Company on this project, which is expected to be completed in January 2022.

The goal of this \$53 million project is to upgrade and expand its central energy plant and equip it with enough power to keep the entire hospital running like usual, even in the event of a disaster. The new 24,000-square foot energy plant will include a new multi-story building, adjacent to the existing central energy plant, to house new steam generating equipment and associated auxiliaries, new stand-by reciprocating engine generators, and new electrical equipment. The equipment will be located on floors above the ground floor to mitigate risk of flooding. An interesting fact about this project is that this building allows for 100% redundancy in power, and also allows them to disconnect from the TECO power grid during storms and/or outages and be totally self-sufficient for all electrical needs, critical and non-essential.

This project includes over 12,000 feet of piping systems with over 20,000 welded joints, chilled water piping to new A/C equipment, steam, steam condensate piping, exhaust, natural gas, diesel and cooling water piping for four (4) CAT generators located on 3rd floor and four (4) heat exchangers located on the roof. BCH Mechanical is also installing three (3) 20,000 gallon diesel storage tanks and three (3) 2,000 gallon lube oil tanks, three (3) steam (dual fuel) boilers, two (2) deaerators and condensate/surge tanks and multiple pumping systems for associated utilities.



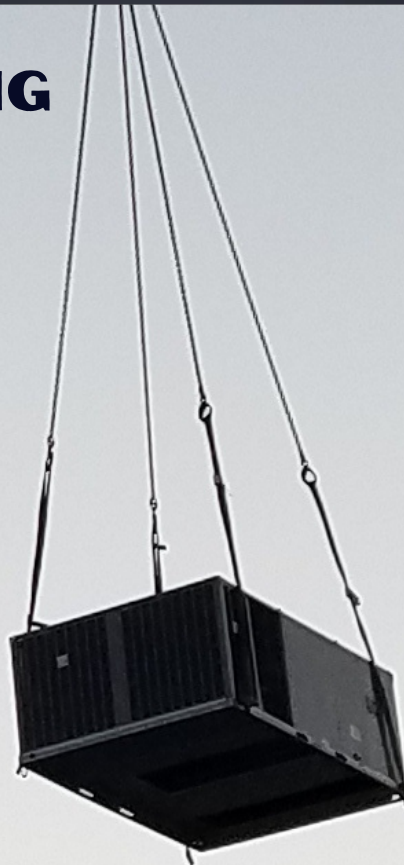
CONSERV BUILDING SERVICES

RECENTLY COMPLETED PROJECTS

TARGET 688 DAYTONA BEACH
ACH - CARDIO CLINIC - 2ND FLOOR
SHORECREST CHARGER COMMONS 2ND FL
ZUMIEZ 557
APYX MEDICAL
CARMAX 7105 TAMPA
WELLS FARGO CLEARWATER
ISLE OF SAND KEY

RECENTLY AWARDED PROJECTS

BED BATH & BEYOND - MULTIPLE LOCATIONS
CIRCLE K - MULTIPLE LOCATIONS
AMERICAN OUTFITTERS 265
PETRO 377
JACKSONVILLE BEACH
THE BUCKLE 429
GRAND CENTRAL - EAST & WEST BLDG BOILERS
WELLS FARGO 4TH ST RESTROOM RENO
MOAIC FISHHAWK - 1ST & 4TH FLOOR RENO
POINCIANA MOB STE 101 - BROOKS REHAB
THE CHILDRENS PLACE 1447
NORDSTROM TAMPA INTL PLAZA
IRON MOUNTAIN TAMPA
COUNTRYSIDE COOLING TOWERS



BCH MECHANICAL

RECENTLY COMPLETED PROJECTS

EISENHOWER MIDDLE SCHOOL
ENCOMPASS REHAB HOSPITAL
IOVANCE BIOTHERAPEUTICS
WILSON & GIRGENTI OFFICE
INDUSTRIOUS 200 CENTRAL CONSTRUCTION

RECENTLY AWARDED PROJECTS

MORGAN FITZGERALD MIDDLE SCHOOL
TGH 7C BMT RENOVATION
JABIL GSB RENOVATION
TGH LINAC EQUIP REPLACEMENT
USF CPH MEDICAL LAB
RAKUTEN
MEASE DUNEDIN HOSPITAL
INNOVAGE TAMPA
TAMPA CONVENTION CENTER PH II
THIRD LAKE PARTNERS 3RD FLOOR BUILDOUT
MOFFITT GROUND FLOOR PHARMACY RENOVATION

TAKE YOUR **SHOT** TO WIN!



**New Ford F-150 Worth \$40,000 OR Cash Equivalent
&**

\$50,000 IN CASH PRIZES

In an effort to fight this pandemic, we need your help! The COVID-19 vaccines are one of the most effective tools to protect your health and prevent disease.

We recently launched a program to help drive an increase in vaccination rates within our company. We will have a potential of five drawings, each giving away \$10,000. The end goal being to reach 90% employee vaccination and raffle off a new Ford F-150!

If you are an employee and become fully vaccinated, please email proof of vaccination to the Human Resource Department:

- **ShotToWin@bchmechanical.com**

If you have already submitted proof of vaccination, there is no need to resubmit. You will be automatically entered into the drawing.

If you are an employee and want to know more about the program rules, please reach out to your supervisor or the HR Department.

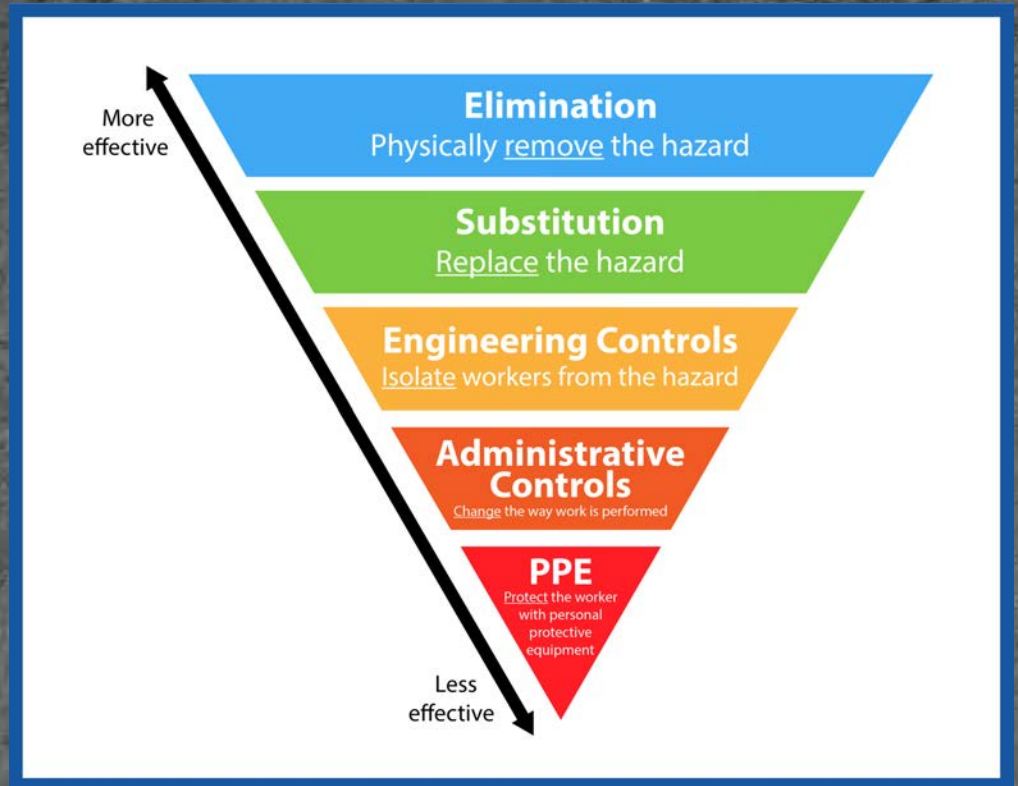


SAFETY MATTERS!



PPE: OUR LAST LINE OF DEFENSE

Controlling exposures to hazards on jobsites is a fundamental method for protecting our employees, but far too often workers utilize PPE as the first line of defense against hazards. Unfortunately, according to OSHA and industry best practices, it should actually be considered a last line of defense. As you can see from the "Hierarchy of Controls" chart shown, PPE is the least effective form of protection for workers. It is often called the "last line of defense" for worker safety.



Although elimination and substitution are the most

effective ways of reducing hazards and protecting employees, they are also usually the most difficult to implement. Assumptions should not be made though, until a proper job hazard analysis is completed. In reality, elimination and substitution may actually be a simple, low cost solution.

When the hazard cannot be removed completely or substituted, engineering controls are the next best hazard control method. Engineering controls are used as a way to place a barrier between the hazard and the employee. Examples of engineering controls include guardrails and machine guards.

When hazards still exist, administrative controls represent the next level of protection for the employee. Administrative controls are less effective at protecting the employee than engineering controls, substitution and elimination. Procedures, training and signage are examples of administrative controls that can be implemented.

As a control method, PPE is definitely less effective than all of the other control methods mentioned. However, when hazards still exist and all other control methods have been exhausted, PPE represents the last line of defense for the employee. It is the least effective means of protecting the employee and, unfortunately, is only as effective as its proper and timely use. Simply put, PPE needs to be worn at all times to be effective. This decision is ultimately up to the employee and, in many cases, they may not be afforded a second opportunity to rethink their decision on whether to properly wear PPE or not.

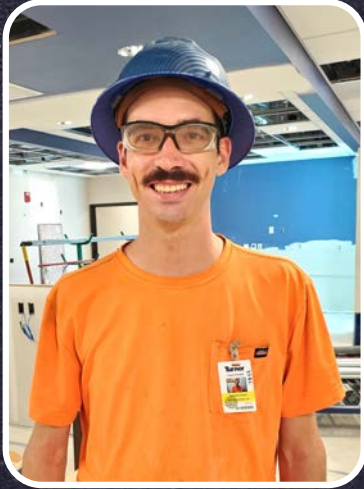


J.J. THE "BEE" AWARD



BCH MECHANICAL'S EMPLOYEE RECOGNITION PROGRAM

July Winner



Zachary Duda

August Winner



Mike Castro

September Winner



Tenilla Medeiros



ROWER OF THE MONTH



CONSERV BUILDING SERVICES EMPLOYEE RECOGNITION PROGRAM

July Rowers

Charlotte: Zack Hampton
Raleigh: Dardan Dabaj
Atlanta: Adam Baker
Tennessee: Albert Johnson
Alabama: John Pollard
Orlando: Jonathan Miliano
Sunrise: Connie Bruce
Largo: Linus Barber
Largo Trades: Kyle Green

August Rowers

Charlotte: Miles Code
Raleigh: James Davis
Atlanta: Al Geddes
Tennessee: Johnny Napolitano
Alabama: David Murphy
Orlando: Juan Torres
Sunrise: Brandon Melvin
Largo: Mike Dones
Largo Trades: Dan Rue

September Rowers

Charlotte: Matthew Hand
Raleigh: Miguel Garcia
Atlanta: Kristee Whorton
Tennessee: Gloria Mallet
Alabama: Josh Moore
Orlando: Ernesto Rodriguez Perez
Sunrise: Raymond Spaulding
Largo: Nathan Ortiz
Largo Trades: Sam Wisner

What's new at BCH Mechanical and ConServ Building Services?



Our Estimating and Sales team (pictured above) had a blast at the ABC Young Professional Cornhole Tournament in September! The Young Professionals program helps develop the next generation of ABC leaders and encourages networking among the "best and brightest" up-and-comers in construction.



JE Dunn Construction & BCH Mechanical teamed up for the ABC Bowling Tournament at Pin Chasers Midtown in August (pictured above). 'The Gutter Gang' may not have had the highest score, but we most definitely had the most fun!

HQ HOSTS A BLOOD DRIVE!



You're Somebody's Type! The BCH Mechanical & ConServ team had a visit from the OneBlood Big Red Bus in August! Giving blood is a simple thing to do, but it can make a big difference in the lives of others. Someone in the U.S. needs blood every two seconds and one donation can save up to three lives. We are grateful to our team of donors for supporting this cause and helping our local community!

Kudos

"We wanted to thank the BCH Team for sending a crew to help us set up the temporary pump system Moffitt asked for yesterday. Thank goodness it was not needed, but it was great to have everyone come together and help pull this last minute request off, in case they did. We know it wasn't ideal to come in after we told everyone the job was closed. And then to stay late in the rain just before the storm came in. But it was very much appreciated by us and the client. We hope that everyone is safe and doing well."

- Brian Schrader, DPR Construction

"We just wanted to reach out and let you know how impressed Trane was with **Orlando Rodriguez** on the Olive Garden & Longhorn startups. They requested him specifically for any of their future work in this area. Please thank him for us and let him know how much we & the customer appreciate his thoroughness!"

- Jennifer Tye, CSUSA Customer Experience Manager

"I just wanted to pass along some huge recognition to **Connie Bruce**! When I think about outstanding partnership, level of urgent service to my stores, and timely updates via email with specifics on issues... there is not a better dispatch individual for ConServ other than Connie. While parts are taking a while to come in, we do know that you Connie, are all over it.

Connie, just know Target really appreciates you, and your almost concierge customer service and making Target a priority consistently!"

- Ashley, Target

ABC NEXGEN LEADERSHIP PROGRAM



BCH Mechanical is proud to announce that our Project Manager, **Andrew McAuliffe**, was selected to be a part of the Associated Builders and Contractors Florida Gulf Coast Chapter NEXGEN Leadership Program. NEXGEN is an avenue for promising industry leaders to spark their leadership, teamwork, and creative abilities. Congratulations to the entire class of 2022! We cannot wait to see what you all accomplish!

Steve Cona III, President and CEO of ABC Florida Gulf Coast, had this to say about this year's class; "Our 2022 NEXGEN Leadership Class represents a very diverse group of professionals with unique backgrounds and industry experience."

BCH Mechanical truly believes in this program, and we are proud to be a program sponsor for this year's class.

